

## **1. Introduction:**

The PM1000+ Language Loader PC Software enables the user to upload available languages to the PM1000+. This allows the user to access embedded help and utilize the menu structure in their native language where available.

## **2. Required Materials:**

### **2.1. Hardware Required:**

- PM1000+ Single Phase Power Analyzer with hardware revision 52 or greater (VPN 100-085).
- RS232 Cable, 9-pin, D-type, Female to Female, Modem (straight through) cable (VPN 77-015).
- PC.

### **2.2. Firmware Required:**

- PM1000+ firmware, Unicode version (VPN 11-155) release 4.23 or higher. This should be pre-loaded into the PM1000+ as per the instructions in 'The PM1000+ Firmware Upgrade' document (VPN 87-358-0-02F).

### **2.3. Software Required:**

- PM1000+ Language Loader PC Software (VPN 28-322).
- Selected language pack, see the Voltech website at [www.voltech.com](http://www.voltech.com) for available languages.

## **3. Installing the Software:**

### **3.1. Unzip the Software**

Unzip the software in a suitable location.

### **3.2. Install the Software**

Double-click the setup.exe file to start the installation process. Follow the prompts to install the software. The installation will place an icon on the PC desktop.

## **4. Loading a Language into the PM1000+**

### **4.1. Connect Communications**

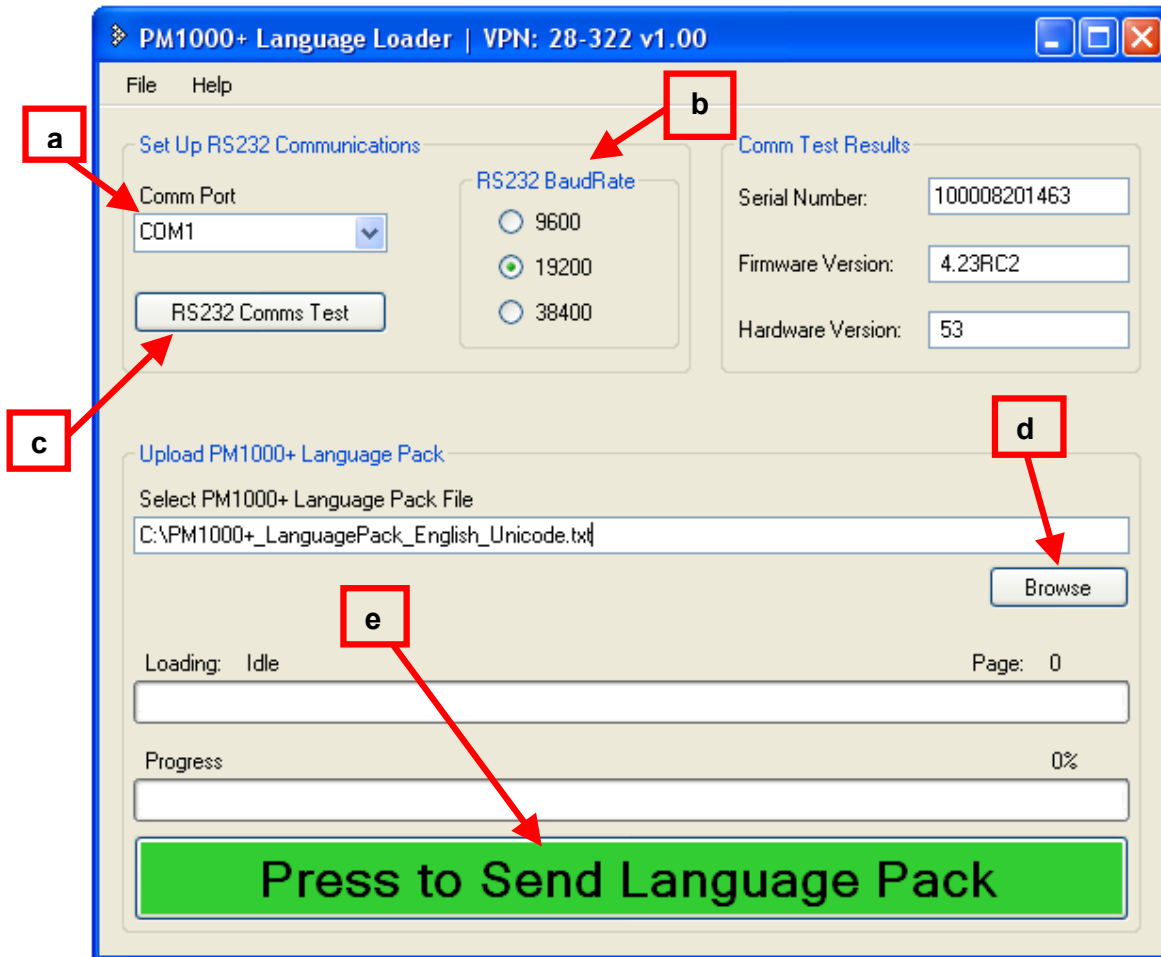
Connect the RS232 cable as described in the PM1000+ User Manual (VPN 98-115).

### **4.2. Opening Software**

To open the software, locate the icon on the PC desktop and double-click it.

### 4.3. Configure and Run Software

After opening the software, the user will first configure the communications interface and then run the software, Figure 4-1.



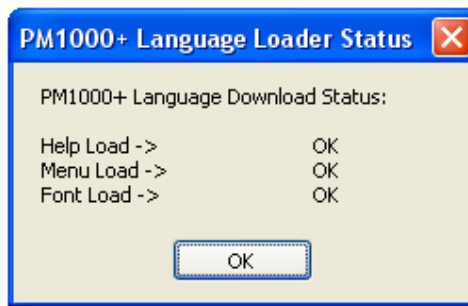
**Figure 4-1: PM1000+ Language Loader Software**

- a) Select the appropriate comm port using the pull-down selection box.
- b) Select the desired baud rate; the PM1000+ default baud rate is 19200.
- c) Test the communications by clicking on the “RS232 Comms Test” button. This will fill in the serial number, firmware version, and hardware version of the PM1000+ to be programmed.

**NOTE:** The Unicode version of firmware (VPN 11-155) version 4.23 or greater and hardware version 52 or greater is needed to load a language to the PM1000+.

- d) Select the PM1000+ Language Pack using the Browse button.
- e) To initiate the upload process, click on the “Press to Send Language Pack” button.

When the download is finished the user will see a status message regarding each component of the download process, Figure 4-2.



**Figure 4-2: PM1000+ Language Loader Status Window**

#### **4.4. Cycle PM1000+ Power**

When the download process has finished, it is necessary to cycle the power of the PM1000+ to ensure proper operation.

#### **4.5. Operation**

The PM1000+ is now operating with the newly installed language and enhanced help.

### **5. References**

- PM1000+ User Manual (VPN 98-115).
- For more information visit the Voltech Instruments web site at <http://www.voltech.com/>.